

SITRETT MX Project is developed to be the most powerful and harmless cleaner in the world within İNNOPARK Technology Development Center which has 6 regional university co-operation

SITRETT MX has a unique formulation than all known cleaning products. The formula is generated by our own R&D and It is not acidic either not hydroxide based product. SITRETT MX is a alkali based with silicon-bpa-sles-sls free ingredients multi-purpose cleaning product.as its non-flammable as well as non-explosive

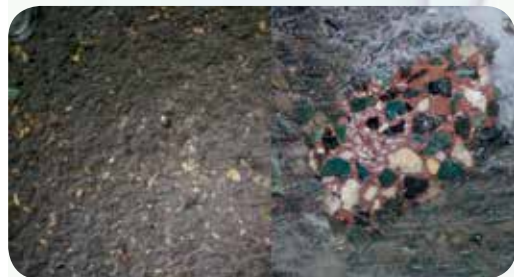
- SITRETT MX is a Nano-technological product
- SITRETT MX can be used on almost all areas and surfaces except lime removing.
- SITRETT MX offers users to clean variety of areas just with one product.itself.
- SITRETT MX is the only alkali based product in the world that can remove rust.
- Although it is so strong, does not harm the nature either the health of human-being with proven dermatological reports on this matter.
- SITRETT MX is concentrated product can be used directly both concentrated itself and no harm-damage to applied surface but becomes affordable when its diluted with water to make the same cleaning effect.
- SITRETT MX; has MSDS - ISO 9001 - ISO 14001 - ISO 18001 - GMP - REACH - DERMATOLOGICAL TEST Reports and Environmental İmpact Assessment Analyses.

A)HOW TO USE IN VARIOUS SECTORS AND FIELDS

Sitrettp can be used safely wherever needed to remove Oil - Rust - Dirt - Stain in various areas such as Heavy and Light industrial factories ,production workshops, aircraft - tram - bus - ship and transportation vehicles, cars and caravans, dry cleaning companies, hotels and hospitals ,car washers ,carpet washers ,technical services, textile workshops ,hairdressing salons and especially for home usage.

It is effective for all areas such as ;Carpet, sofa, curtain, textile, etc. / granite - tiles - toilet stones / furniture - flooring - wood - plastic or PVC surface like door - window - chair / artificial or real leather / oven - hob - hoods or extractors, metal surfaces / car upholstery, windows, wheel, rim, engine block / machine parts used in heavy industry.

Remark: Do not use in delicate textiles , non-glaze-stained paints and low quality aluminum surfaces



B) RATIO AND USAGE IN SAMPLE USAGE AREAS

1) Wet Surfaces and Dry Floors:

“Granite - tile - ceramic - water resistant parquets, floor and wall upholstery, mirror – glass surfaces”

If there is heavy OIL / DIRT / STAIN and similar deposits on these areas, it may be preferred to use directly or diluting at the rate of 1/10 (1 product 9 water) depending on their density. It can be diluted at the rate of 1/50 if DAILY CLEANING is to be done in these areas only..

Do not forget that this rate may vary depending on hardness of the water you use. Please increase the product proportionally if it is not effective at HIGH dilution rate. You should know that you determine the best rate as a cleaning specialist..

Reminder: Do not forget that it may leave residues which may cause paleness on the surface when dilution rate is decreased (as rate of the product which is added into dilution water is increased) so it may require more RINSING.

2) Squatting Pan, Bathtub, Ceramic Surfaces, Chrome Sink Basin and Faucets

Yellowing of squatting pans, bathtubs, sink basins, hard water stains on faucets, slight yellowing of bottom side of faucets are common problems.. Don't worry, these are not problem for SITRETT MX. Just learn how to apply it.

APPLICATION: Depending on density of dirt or stain, spray/pour SITRETT MX on the problematic area directly or diluting at the rate of 1/1. Wait 3 to 5 minutes in order to enable SITRETT MX to react and then, rinse after scrubbing with a hard sponge..

WARNING: If stain or yellowing is too much, apply the product directly without diluting and wait for at least 5 minutes or 10 minutes if necessary, scrub with a hard sponge and rinse. Use limescale remover for hard water stain.

3) Wipeable Wallpapers and Wipeable Painted Surfaces:

With SITRETT MX, you can easily clean all kinds of stains on wipeable wallpapers or painted surfaces that are difficult or impossible to remove such as marks caused by furniture, hand marks, black mark caused by radiator, pencil, pen, tea-coffee, oil marks, lipstick - foundation - make-up marks, tape and adhesive marks.

APPLICATION: Appropriate dilution rate for these stains is 1/10.. (1 product 9 Water) Depending on heaviness or persistency of dirt or stain, 1/5 - or 1/1, if result is not obtained again, direct application options should be tried respectively. It is important to note that surface to be cleaned is wipeable.

WARNING: On sensitive wallpapers that have too many colors or on painted surfaces that are not wipeable, it should be tested by applying to a small area against possibility of discoloration or fading. Quality of paint on surfaces will directly affect the result.

4) WOODEN SURFACES:

It has cleaning – nourishing - polishing effect for surfaces such as wooden stairs, railing, door – window and furniture.. You easily can clean surfaces of woods bleeding resin out such as pine, etc.



Relax.. Even if your cloth is stained by pine resin, it will come out without any problem thanks to SITRETT MX.

APPLICATION: It can be used on wooden surfaces by diluting at the rate of 1/25 (1 product 24 water). Amount of the product is increased at the rate of 1/25 or 1/10 or amount of water is decreased depending on the dirt rate of the area. To clean resin bleedings, spray the product directly to that area, allow 3 minutes for REACTION and wipe the area. However, because of the water structure in your area, the best dilution rate should be determined by you as a person who apply the product.

5) Carpet - Fabric - Textile Products:

SITRETT MX is a very effective cleaning product for surfaces containing fabric which we use in every area of our lives. It will meet your cleaning needs effectively and easily on curtain, tulle, textile and any area containing fabric and on surfaces such as carpet, armchair etc. SITRETT MX will clean every fabric which you are in contact with, from upholstery of airplane, train, ship, truck, automobile, etc. to carpets and seating groups in your homes or workplaces, from regular clothes such as trousers - shirt - dress - apron to special clothes such as evening dress - wedding dress. Persistent stains such rust, mold, tea - coffee - tomato paste - oil - pitch - soot - gum - hair dye - wax - tape mark - pomegranate - mulberry, hem / collar / armpit stains etc. will not be a problem for you anymore.

APPLICATION: To remove these stains or any other stain that has not been tried to be removed before, apply Sitrettp MX product to the stained area without diluting or diluting at the rate of 1/5 depending on persistency of the stain.

Spray on the stain without diluting or diluting depending on the difficulty of the stain and delicacy of the fabric, wait for 3 minutes for REACTION and then, mechanically scrub with a suitable brush, rinse.. You can wash by adding a glass of Sitrettp MX to liquid detergent section of your washing machine.

For clothes with a persistent stain which has not come out, spray directly on stain, scrub with a brush and don't rinse, wash in washing machine in an ideal setting..

REMINDER: Depending on delicacy of the fabric on which you apply the product, it is recommended to be applied gradually from more diluted to less diluted. Cleaning of the stains may vary depending on the type of fabric. Product must be applied after it is tested on an area which can't be seen from outside.



WARNING: New carpets may require whole cleaning instead of regional cleaning. Apply carefully depending on TINSEL, SILK or WOOL content of the carpet on which the product will be applied. Even if no complaints have been received so far about carpets including TINSEL, SILK and WOOL carpets, test on an unseen area first and then, use by reducing dilution rate gradually starting from diluted product. Problems and damages due to improper use are under the responsibility of the person who applies the product.

Product Structure and logic of usage

SITRETT is a multi-purpose DIRT,STAIN AND OIL REMOVER product is more concentrated than most of the thickened products, although it has a fluid structure. This product is concentrated and can be diluted as needed for the areas applied.

To remove OIL, STAIN,RUST AND ALL KIND OF DIRT ,just find the proper dilution rate , apply the product , wait up to 3 minutes for REACTION, if necessary, mechanical scrub with brush and then rinse totally be sure product has been totally transferred.

SITRETT MX has an extra strong reactionary effect including with a large number of active substances which can be used in all kind of areas without damaging and harming the original surface.

WHERE CAN WE USE?

Rust, moldiness, bitumen, hair dye, sediment, oil, tape adhesive residue, chewing gum, rollon, soot, urine, turd, blood, wax, pomegranate, mulberry, fruit juice, milk, sauce, tea, coffee, grass, chocolate, net curtain, erasable paint and veneer wall, oven, aspiratör,sink, water spot, car's plastic,cloth and engine surface, metal, virgin, chrome, pvc, plastic, leather, textile, glass, mirror, glazed tile, granite, composite, wooden.

6) Net Curtain: Spray the product directly to the blacked area of your net curtains and then, put them into washing machine. Pour a water glass of SITRETT MX to the stain remover or bleach section of your washing machine and wash with an ideal program without detergent. You will see that your net curtains are spotlessly clean.

WARNING: NEVER mix the product with bleach or other cleaning products. In such a case, SITRETT MX will lose its effect.

7) Kitchen: Literally, there will be a "REVOLUTION" in your kitchen... Spattered oil stains on your kitchen furniture, burned food residues with products such as tomato paste after boiling over on your stoves, oil and burned oil on your stoves' eyes, oily dirt that reached under stove and oven buttons, burned oil and dirt in your ovens, unpleasant fried fish odor on your plates, residues on kitchen faucets, all kinds of oily food vapor residues on your aspirators, heavy oil stains on



your stove hoods... All your kitchenware with shiny surface such as outer surfaces of teapots, pots and pans etc.. Now, ALL OF THEM are SPOTLESSLY CLEAN with SITRETT MX.

APPLICATION: These kinds of stains are very hard and difficult to clean. Spray SITRETT MX product directly on

dirt, allow a few minutes for REACTION, scrub with a hard sponge and then, rinse.. To clean inox surfaces, you can use it by diluting between 1/5 and 1/1 or applying directly. It makes inox shiny and it also has dirt retarding feature.

WARNING: It may leave residue/stain on inox and similar surfaces when it is used directly because it is concentrated and dense. Rinse well depending on properties of the surface on which it will be applied or increase dilution rate up to 1/5.

WARNING: Decrease waiting time or apply after testing on a small area since it may cause tarnish on aluminum surfaces and some decorative shiny cabinet handles/coatings.

8) Leather/ PVC / Plastic Surfaces: SITRETT MX effective cleaning product has surprisingly amazing effect on LEATHER - PVC and PLASTIC surfaces. Be careful while using on genuine leather surfaces, it may peel the paint. You must rinse with a wet cloth. "SPRAY, WAIT, SCRUB, RINSE"

APPLICATION: Spray SITRETT MX product diluted at the rate of 1/1 to 1/5 on leather and plastic / plastic coating or PVC products, where dirt is trapped between the cells and folds over time and after creating a REACTION effect by waiting for 30 seconds to 3 minutes depending on the condition of the dirt, wipe and rinse.

If the stain or dirt is too persistent, repeat the process by spraying SITRETT MX directly without diluting. You will see that application area is cleaned and at the same time, it shines by being nourished. Do not forget that it may fade the paint while using on leather surfaces designed with paint.



WARNING: Material quality of the surfaces mentioned above is very important. Even if no complaints have been received so far about this, it is necessary to test and be careful before using directly on very delicate or poor quality surfaces. It may change or fade the color by interacting with paint on some absorbent leather surfaces. The person who applies the product is responsible for the application result.

9) Barbecue: Do not throw RUSTED barbecues and their components such as wire grill etc. on which heavy and burned oil layer is accumulated because you can't clean them.. With SITRETT MX branded product, you can easily clean these surfaces with persistent dirt and oil.

APPLICATION: Spray the product directly on the dirty surface without diluting, scrub with a brush after waiting for 10 minutes for reaction and rinse. Application to hot surface increases effect of the product.

10) Automobile - Truck Cleaning: Heavy industrial vehicles with persistent dirt such as automobile - truck - bus - train wagon - subway and metrobus - yacht - ship - airplane - heavy duty vehicle, etc. and all surfaces of these vehicles that require gentle and heavy cleaning. SITRETT MX easily REMOVES dirt which is difficult to be removed by DETAILED cleaning companies, waxed stains on upholstery, heavy grease on engine block.



APPLICATION: Depending on density of dirt, you can apply SITRETT MX directly or by diluting at the rate of up to 1/5. After spraying SITRETT MX product diluted at the rate of 1/5 on upholstery, wait a few minutes for reaction and rinse with a wet and clean cloth.. You can increase or decrease dilution rate depending on density of the stain. Spray 1/1 diluted or undiluted pure product on engine block, wait a few minutes for reaction and rinse.. You can get more effective result when you apply on HOT surface. You can add 1 to 3 cups to washer liquid tank of the vehicle. (Excessive amount will leave residue on glass edges.) You will see that dead flies and similar dirt are cleaned easily. It can also be used to clean bodywork.

WARNING: Do not use on nickel plated and shiny surfaces of the vehicles, sensitive / poor quality plastic parts and center console.. Clean all other areas completely or prevent product from splashing on them. MAKE SURE THAT you PREVENT product from accumulating and remaining in any part of the vehicle directly.. Avoid applying the product directly and intensively to headlining against risk of sagging. The person who applies the product will be entirely responsible for problems due to misuse.

GENERAL WARNINGS AND REMINDERS

* Dilution rates of the product may vary depending on the water structure in your area. The best dilution rate can only be determined by the user.

* Wherever it is used, remove it from the surface with a wet cloth or water to prevent it from harming the surface by remaining.

* Do not use on delicate fabrics without testing.

* Do not keep the product too long on aluminum surfaces, do not use it without testing on an unseen point.

* It may cause tarnish on surfaces polished with special treatment, do not use without testing.

* The product is not suitable for cleaning the skin. It may irritate sensitive skins.

* Trigger head of the product has high ATOMIZATION feature. If you use it by spraying with a trigger head, ventilate areas where you use it extensively, do not inhale too much and make sure that you rinse well.

* Adjust "Dilution" rate well to prevent it from leaving residues on hard and shiny surfaces such as glass - tile.

* You must read DIRECTIONS FOR USE on the product bottle.

* If the product does not come with a trigger head, it has a cover with a special security system.

* DO NOT LEAVE THE PRODUCT OPEN when storing it and do not store it in direct contact with the open air.. Some active ingredients of the products stored in this way will disappear and product will lose its effect.

* NEVER MIX the product WITH ANOTHER CLEANING PRODUCT.

* This product does not contain HYPO - BLEACH - OXYGEN BASED BLEACHING AGENTS.. DO NOT MIX it with these and similar



chemicals, it will NOT be EFFECTIVE because it has opposite action logic.

* Keep the product out of the reach of children. Do not use the product to clean food and skin.

* No matter where the product is used, it should be used after being tested on an unseen point. All kinds of problems caused by use will be under the responsibility of the user.

* This product's Formula - Package design - Comics / Visuals and Trademark are registered.. Please note that legal action will be taken when necessary.

For any information which you can't find in this guide, please see FAQ (Frequently Asked Questions) through www.sitrett.com or you can contact our experts through this address.

+90 542 842 92 54

+90 850 840 97 65

www.sitrett.com

destek@sitrett.com

/Sitrettmx /Sitrettmx

/Sitrettmx /Sitrettmx

M. Barış Sütçü
Nogayt Grup CEO



DÜNYANIN
EN GÜÇLÜ
TEMİZLEYİCİSİ
OLACAGIZ

Multi-purpose
miracle formula
cleaning product